



Brunswick County Master Gardener
Volunteer Association

NEWSLETTER

February 2007

Upcoming Events...

Feb 10th & 11th ... Wilmington Garden Show
Schwartz Center, Cape Fear Community
College, 601 N. Front St

February 12th ... 4-H Lasagna Lunch &
Candy-Gram Sale! Make your Valentine
Happy! Call Blair for details

Feb 17th 9-5& 18th 12-5... Brunswick Co
Greenhouse Tour...Alma Buffkin 117 Lee
Drive, Sheldon Herb Farm 340 Goodman Dr,
Louis & Carol Lee 149 Maco Rd.

Feb 22nd Regular MG Meeting 9-12....
Dan Keir and David Barkley - Grafting -
Dan also attended the Master Gardener
Training as one of David's students in the
early 80's. Owner operator of Japanese
Maples of Wilmington. The art of grafting
will be a hands on opportunity. We will also
have some visitors from Bladen Co MG.

Feb 26th ... Join a van of MGs for a trip to
JC Raulston Arboretum for a MG class on
Pest Management. \$10 includes lunch so
call Charlie

March 24-25th ... BC Home & Garden Show

April 12,13,14th ... MG Plant sale

May 1-5th International Convention Little
Rock

May 10,11,12th ... MG Plant sale

Oct 8,9,10th ... State MG Convention in
Raleigh

Upcoming Speakers

April 26th Debbie Roos - Organic
Gardening - Hort Agent, Chatham County.

May 24th Bryon Capo - Trees - Urban
Forestry - County Urban Forestry Agent,
New Hanover County.

June 28th Lucy Bradley - NCSU

July 27th Bill Lord - Water Quality – Area
Specialized Agent, Franklin Co.

August 23rd Emily Revels - Hort Agent,
Cumberland County

Sept. 27th Some type of MG Social

Oct. 26th Toby Bost, Hort Agent, Forsyth
County - Has written books on gardening.

Nov 29th Dick Bir - Retired - worked at
Fletcher Research Station in Fletcher NC.

MG Classes are Filling Fast

- David reports that the Tuesday class beginning February 6th has 34 students and the Wednesday class beginning February 28th now has 30. If you have friends wanting to sign up, they should do it now.
- Proposed dates for the Turf class – 3/25,4/12,6/7,6/15
- Plant ID class will begin the March 27th.
- Pro Day Seminar at BCC in Leland on February 28th from noon to 4:30

Will we see you at the February Meeting on the 22nd

Correction

International Master Gardener Conference in the December Newsletter it was reported as being in March 2007. The correct dates are May 1 - 7, 2007 in Little Rock, Arkansas. There are tours before and after the conference, great speakers and lots of interesting workshops. Those interested should check out the web site <http://mq2007.uaex.edu/default.htm>

Master Gardener Pest Management Training

Feb 26, 10:00 am – 3:00 pm JC Raulston Arboretum

- What is an Insect and Pest Management in the Landscape,” Steven Bambara, Extension Specialist, Entomology Department, NC State University
- What New Master Gardeners Need to Know About Plant Disease,” Dr. Tom Creswell, Plant Pathology Department, NC State University

The cost is only \$10 including lunch. Make check payable to NC State University. We will be taking a van full up so sign up soon. Visit the JC Raulston Arboretum before the meeting, at lunch, or after the meeting. Call for registration.

Not Getting Mail?

If you are not receiving e-mails from Charlie re: upcoming events and volunteer opportunities, it's because either he doesn't have your correct e-mail address (verify your address with the office) or your carrier is 2khiway.net, which blocks his e-mails (you will have to take care of this – Charlie can't).

.Wanted: Master Gardeners with expertise in creating web pages. We are forming a technology committee to help bring information to you more efficiently. Call Al Smith 910-457-6674



Master Gardeners Board Elected Officers:

President
Richard Boland
rboland@atmc.net
910-579-5791
Vice president
Shirley Waggoner-Eisenman
shirley312@webtv.net
910-754-4148
Treasurer
Al Smith
Asmith126@ec.rr.com
910-457-6674

Volunteer chairs:

Recording Secretary
Cathie Rod
csrod@ec.rr.com
910-457-5091
Corresponding Secretary
Peggy Meinzer
pmeinzer@lockwoodfolly.net
910-842-4928
Library
Grace Wrigley
gwrigley@atmc.net
910-846-3341
MG Coordinator – Coop Extension
Charlie_spencer@ncse.edu
910-383-6432
NCMGVA Liaison
Shirley Waggoner-Eisenman
shirley312@webtv.net
910-754-4148
Newsletter Editor
Joe Loughlin
jloughlin@ec.rr.com
910-269-4038
Restitution & Greenhouse
Ash Tyler
at Tyler@ec.rr.com
910-278-6101
Gardens
Hilton Holcomb
hholcomb@atmc.com
910-575-4943
Maggie Hoon
fredmaggie@earthlink.net
910-253-0195
Banquets/Parties
Currently vacant
Membership
Dominique Loewenstein
domilo@2khiway.net
910-579-0161
History
Barbara McCoy
mccoy@atmc.net
910-575-7679
Webmaster
Lisa Miner
webmaster@bcmastergardener.org

Member news

Charlie Spencer

Charlie came along great in his operation and actually came to our office on Friday to have lunch with us and to take care of a little business. He uses a walker and gets around pretty good. Keep him and his wife Lou in your prayers.

Maggie Hoon

Maggie is still in Coastal Rehab and is responding to therapy after her stroke. After 3pm she can have visitors. She enjoys having company and is able to talk on the phone.

John Kellett

John is on the mend. He has a couple more Physical Therapy sessions to go and should be back working the Hot line soon.

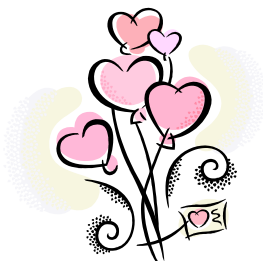
Greenhouse/ Botanical Garden

It is important that all tools are cleaned and properly stored after use. Many new plants are being received at the greenhouse which will require care. Many man hours have been given to complete hard and landscape in front of building F and Botanical garden plus night lighting in all areas. More plants and trees will be added behind building F. Screening will be planted around new area of gas pumps. There is a need for on going maintenance of the water feature in the Botanical garden.

Keep Track of your Mileage

Please keep track of your mileage on your time sheets. One good reason; You can deduct it at tax time.

Happy Valentines Day



Joe's Kitchen

I enjoy bringing fresh garden vegetables in from my garden to the table. I thought I would try to publish a recipe and hope many of you will send in your favorites. This month I have been harvesting lemons from my Meyers Lemon Tree. What a fun plant it has been. It bloomed well last summer and set seven fruits. They were very large and each one made me a pie. It now has probably a hundred blooms that make my bedroom smell like a grove. Here was my favorite pie recipe: **Slice O'Lemon Pie**



Dough for double crusts, one for bottom, one for top

1 ½ C. Sugar	¼ cup softened butter
2 T. Flour	3 eggs
1 T. Corn Starch	1 Med Lemon
1/8 tsp. salt	½ cup water

Preheat oven to 400°. **Filling:** Combine sugar, flour & salt and then blend in softened butter. Mix thoroughly with a spoon. Add water & beaten eggs, less 1 tsp. of white. Blend until smooth. Zest the lemon and chop the zest. Slice the whole lemon into paper-thin slices. Pour 1/3 of filling into crust and top with ½ of lemon slices. Pour second third, add remaining slices, and top with remaining filling. Add the top crust, cut slits to allow steam to escape. Brush Top with egg white and lightly sprinkle with sugar and Cinnamon. Bake for 35 minutes.

*This pie was served for years at the Miller & Rhodes Tea Room.
Coastal Cuisine A Century of St. Philip's Favorites*

Next month I hope to have several recipes from you to try out and pick the WINNER!

(jloughlin@ec.rr.com)



Summer Annuals Trial Report

Top Ten

Petunia x hybrida 'Surfinia Giant Blue'

Jackson & Perkins

Petunia x hybrida 'Surfinia Baby Compact Coral'

Jackson & Perkins

Petunia x hybrida 'Fortunia Trailing White'

Fides North America

Petunia x hybrida 'Tidal Wave Silver'

All-America Selections

Lantana camara 'Landmark Rose Glow Impr'

Ball FloraPlant

Lantana camara 'Landmark Peach Sunrise Impr'

Ball FloraPlant

Petunia x hybrida 'Surfinia Mini-Mini White'

Jackson & Perkins

Lantana camara 'Lucky Pot of Gold'

Ball FloraPlant

Lantana camara 'Bandana Rose'

Fischer USA

Calibrachoa x hybrida 'Milky Way Light Blue'

Fides North America

Begonia semperflorens-cultorum 'Emperor Rose'

Sakata Seed

Begonia semperflorens-cultorum 'Emperor Pink'

Sakata Seed

Begonia semperflorens-cultorum 'Braveheart Rose Bicolor'

Syngenta Seeds, Inc.

More info under Publication at

<http://www.ncsu.edu/jcraulstonarboretum/>

Gardening Tips for February

After the Holiday Plant Care

Poinsettia's keeping quality depends on several factors.

Many home gardeners have no trouble keeping a poinsettia looking good through the winter, but bringing it into "flower" in subsequent years is a challenge for the best of gardeners. They are still considered actively growing even now and will need water, sunlight, and fertilizing through February.



First Garden Vegetables Should Be Planted Soon

Although it's still too early to plant such popular garden vegetables such as tomatoes, beans and corn, it's just the right time for "Coastal Carolina" gardeners to plant cool-season vegetables.

Cool-season vegetables are those that should be planted early in the growing season because they stop producing when hot weather comes. Among the first vegetables that should be planted in the garden are cabbage, carrots, head lettuce, onions, Irish potatoes, radishes, rutabagas, spinach, turnips, edible podded peas and garden peas, which are also called English peas. Soon after they are in the ground, it'll be time to plant broccoli, Brussels sprouts, cauliflower, Chinese cabbage, kale, kohlrabi, leaf lettuce, mustard and Swiss chard.

Planting times vary among the different types of vegetables and in different parts of the state. For instance, if you live in the upper Coastal Plain or lower Piedmont

regions, you should plant carrot seeds between Feb. 15 and March 1. In western North Carolina, delay planting for 10 to 20 days. And in eastern North Carolina, plant 7 to 12 days earlier.

Information on home gardening in your area is available from your local county Extension Office.

Those interested in planting cool-season crops may request a copy of the Home Vegetable Gardening Manual. The free publication lists suggested planting times along with many other gardening tips.



[The NC Master Beekeeper Program](#)

The Program is an educational and public service program in beekeeping which is sponsored by N.C. State University, the N.C. State Beekeepers Association, and the N.C. Dept. of Agriculture. The program is the oldest, continuously active, Master Beekeeper program in the United States. It is a multilevel program with over 3,500 individuals enrolled at some level of the program. Details of the program administration are here.

<http://www.cals.ncsu.edu/entomology/apiculture/mbp.html>

[Checkout the Calendar](#)

We will be updating the calendar regularly on our web page. Check it out. We may also add a separate calendar for hotline. It would allow you to see what days were open and even sign-up online.

February Gardening Chores

- Plant early vegetable gardens such as peas, sugar snaps, onion seeds, head lettuce, carrots, etc...consult your local Extension Agent for information on planting dates.
- Use only fresh new 2007 packaged seed. It is not wise to save seed, particularly hybrid seed, since seed will lose vigor or produce plant not true to type.
- Purchase quality seed from reputable dealers or garden centers.
- Purchase varieties that grow well in your regions or area.
- Select varieties that have resistance to major diseases such as rust or nematodes.
- Keep up with or become knowledgeable with varieties that are genetically superior to older varieties.
- Pansies are by far the most popular winter landscape annual. Deadhead periodically to ensure more blooms. During active growth in the spring fertilize them about once a month.
- Be prepared just on the chance there may actually be some more winter weather ahead of us. Don't let unseasonably mild temperatures dictate what you do in the landscape.



Pruning Camellias

Camellia japonica can be grown as a large evergreen shrub or a small tree and they can also create an excellent screen. The best time to prune is when the blooms fade....about this time of year on many plants. Remove spent flowers to prevent seed formation. If possible, try to make pruning cuts just above the thickened, rough area on the stem.

Winter Lawn Care

February will be a good time to evaluate your turf. The lawns that will need the most attention are the ones that are green and brown! The green parts are the cool season grasses and weeds ...fescue, bluegrass, annual bluegrass, etc. and the brown areas are the warm season grass species...Bermuda, Centipede, Zoysia or dead areas. The goal should be to have one or the other, and not both. Consult the Carolina Lawns publication for complete information on renovating turf areas.



Garden Clean-Up

The soil may be too wet to work, but it's never too wet in landscape beds to add mulch. Generally, this time of year the beds could stand a late winter touch-up. Add a fresh layer of pine needles or bark to the beds.

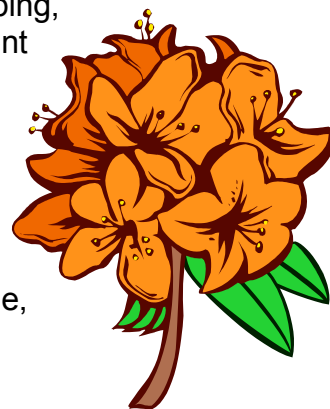
EVERGREEN AZALEAS IN ORDER OF BLOOM

Many landscape projects are planned and planted in the fall for a great display in the spring. Azaleas are great landscape plants and perform beautifully if planted in the correct microclimate....under tall pine trees in rich, well-drained soil, with a sprinkler system would be ideal. It is possible to have a prolonged season of bloom (2 months) from the azaleas if numerous cultivars are used. The following is a list of popular evergreen azaleas according to their normal sequence of bloom.

Early: Hino de-giri, Sherwood Red, Coral Bells, Tradition, H.H. Hume, Hershey's Red, Snow, Hino Crimson, Delaware Valley.

Midseason: G.G. Gerbing, George Tabor, President Clay, Formosa, Rosebud, Elaine, and Pink camellia.

Late: Gumpo, Lady Robin, Martha Hitchcock, Harris Purple, Higasa,



What kills plants?

Answer: Mostly planting too deep, underwatering, overwatering and overfertilizing practices. Sometimes new plantings are sensitive to cold damage in the winter. Extra care may be needed to get the newly establishing plants through a cold winter. Mulches help and so do some of the wraps. Better yet, make sure they are planted in the right location.

2007 Dues Notice

Dues are payable by January 1 each year.

Make checks payable to: Brunswick County Master Gardener Volunteer Association (BCMGVA)
\$5.00 per Individual

Name _____

Address _____

Email _____

Mail checks to: Linda Lemieux

3882 Members Club Blvd.

Southport, NC 28461

If you have an item for the newsletter, submit it to Joe Loughlin (jloughlin@ec.rr.com)

Brunswick County Master Gardener Volunteer Association
P.O. Box 109
Bolivia, NC 28422
Office: 910-253-2610

www.bcmastergardener.org

www.ces.ncsu.edu/brunswick

www.ncmastergardeners.org

NAMETAG; you have earned it, now wear it.
We would all like to know your name.



Postage stamp

First Class Mail